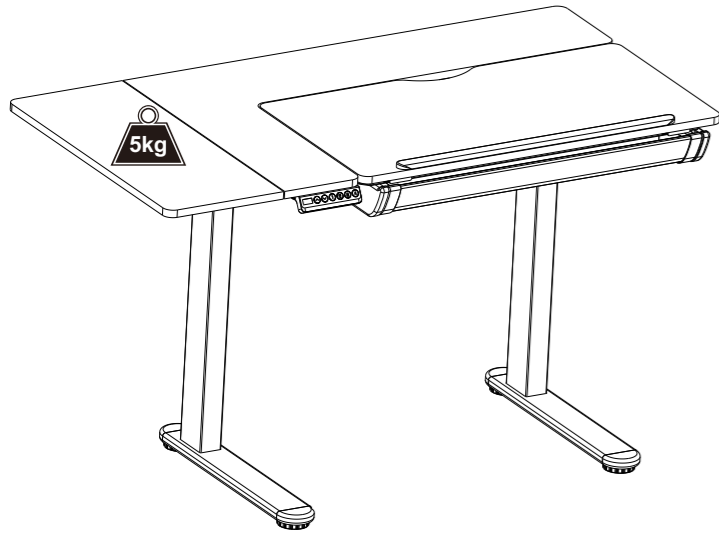


A G I L



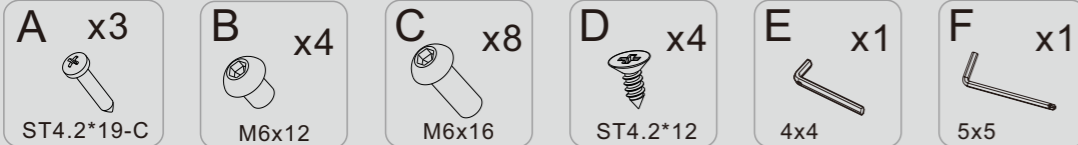
Technical data

Column Number	2
Maximum Load	50KG
Max Speed	25mm/s
Input Voltage	100-240V
Lowest Position	730mm
Highest Position	1230mm
Desktop Size	950mm(length) 600mm(width)
Extension size	600mm(length) 250mm(width) (max 5kg)
Tilt range	0~40°
Duty Cycle	Continuous operation for 2 mins at most after pause for 18 mins
Applicable Temperature	0~40°C

Installation guide

Accessory list

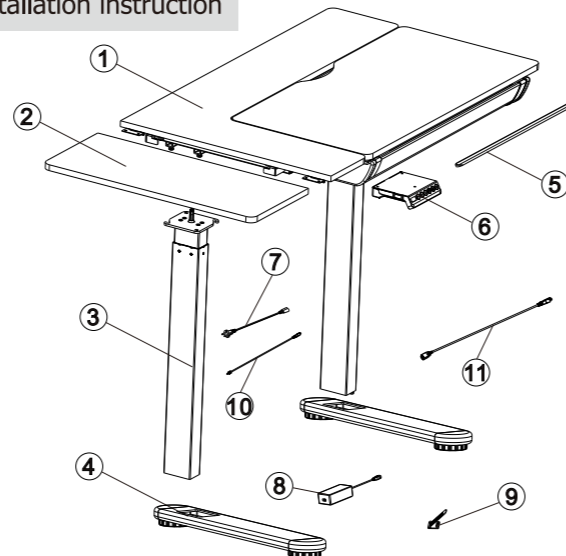
Attention: The drawings below are only for reference which might be slightly different from the actual object, please in kind prevail. Any tools missing or installation problems, please contact the customer service firstly.



Part list

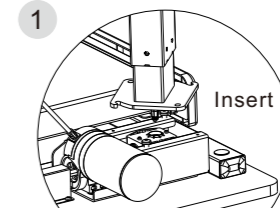
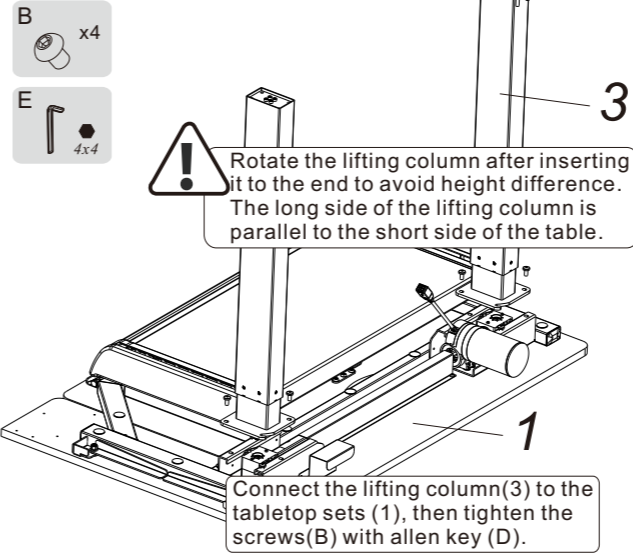
No.	Part	Qty	No.	Part	Qty	No.	Part	Qty
①	Tabletop sets	1	②	Extension sets	1	③	Column	2
④	Pedestal	2	⑤	Supporting pads	1	⑥	Hand switch	1
⑦	Power cable	1	⑧	Adaptor holder	1	⑨	Cable tie	4
⑩	Switch cord	1	⑪	Extension cord	1			

Installation instruction

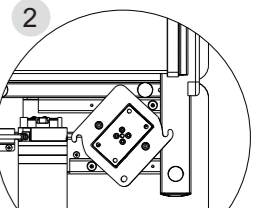


STEP1

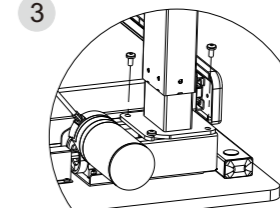
Install the lifting column



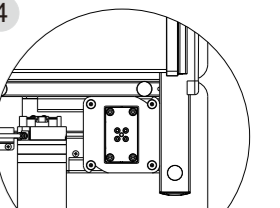
1 Insert the hexagon head of the lifting column along the guide slot.



2 Rotate the lifting column after inserting, so that the slot is locked into the screw.

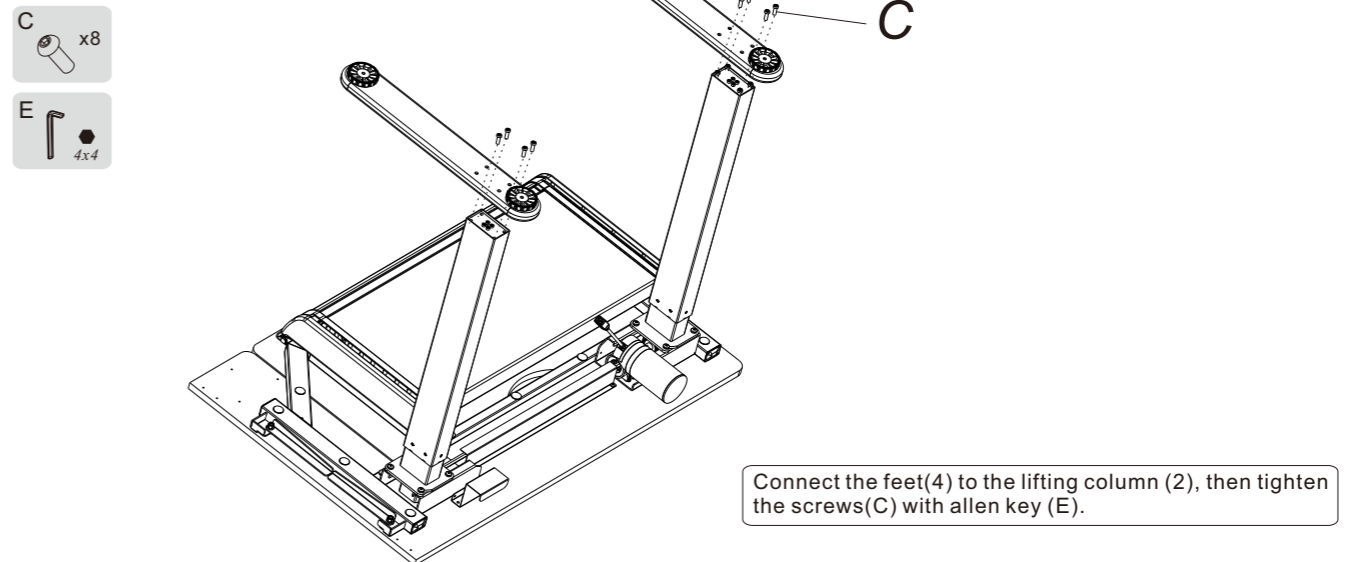


3 Tighten the eight screws(B) with 4*4 allen key.



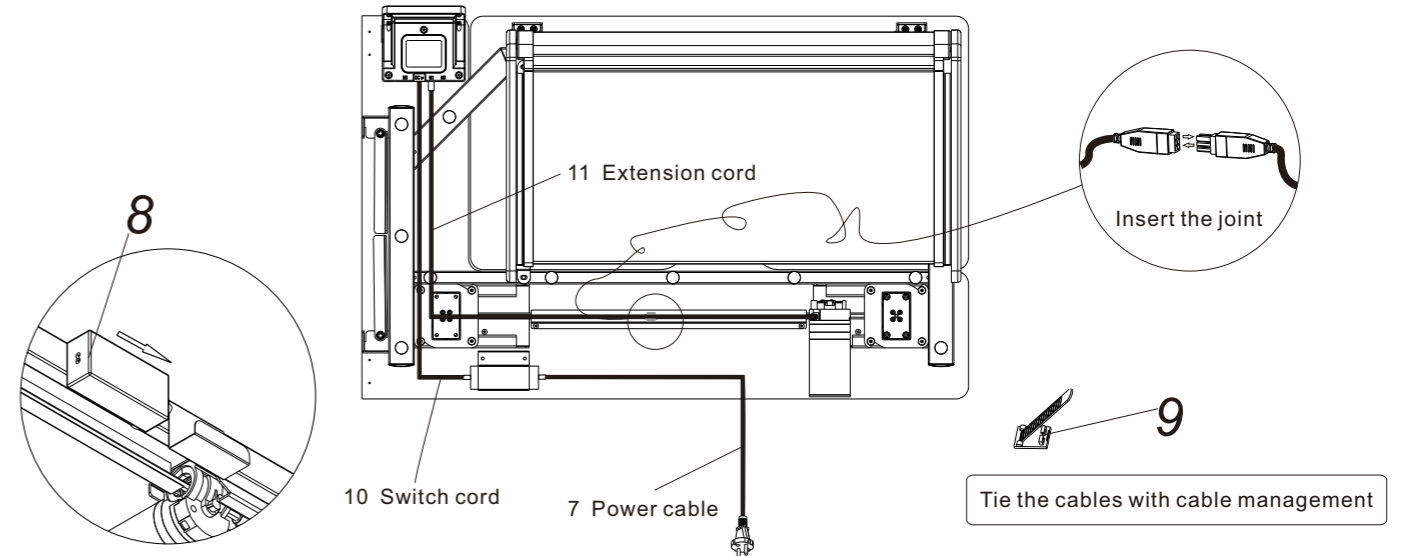
STEP2

Install the feet



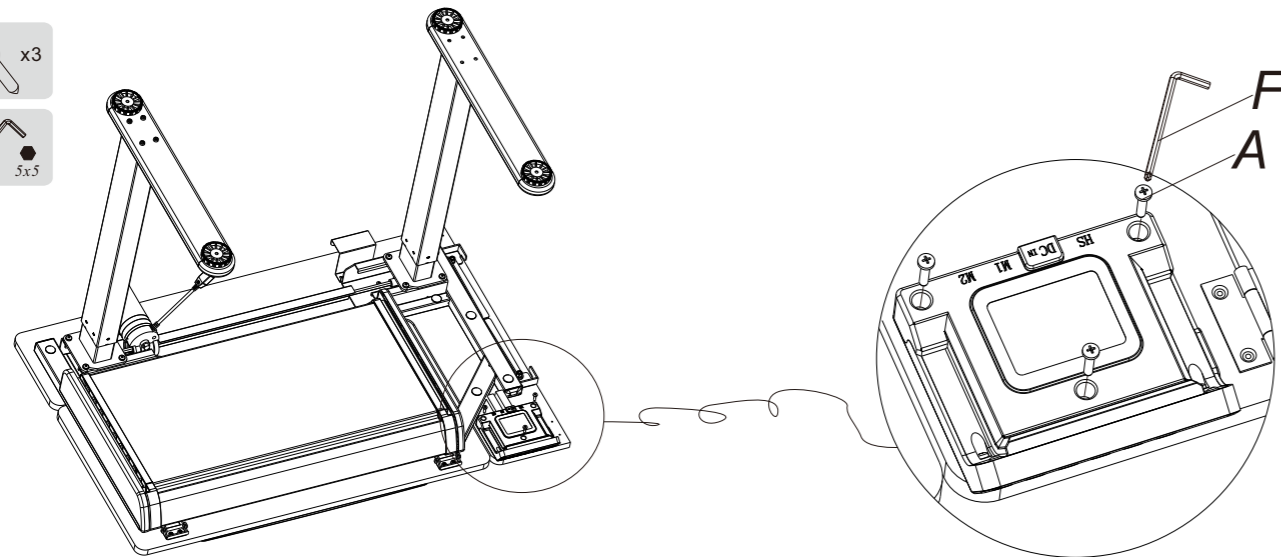
STEP3

Connect all the cables to the adaptor



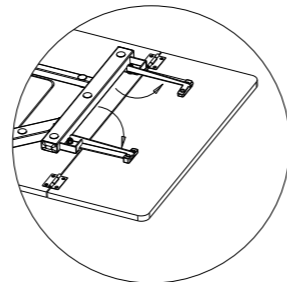
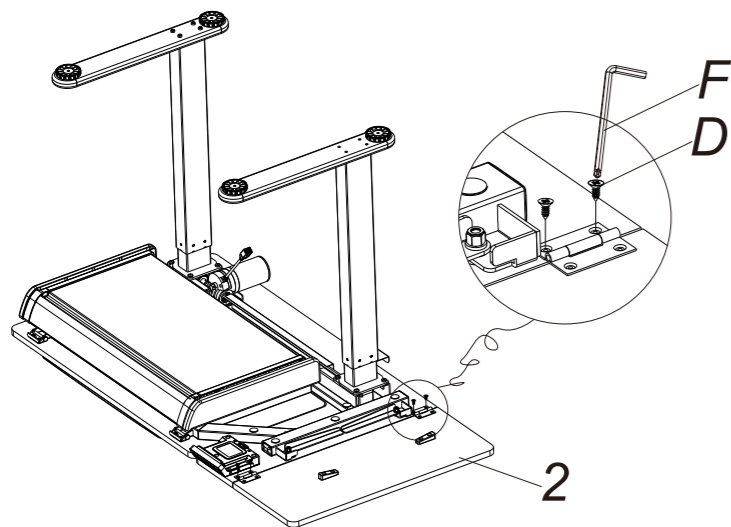
STEP4

Install the handset

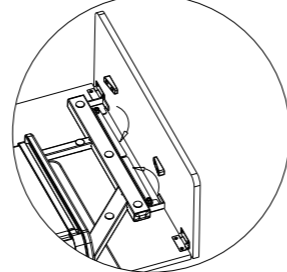


STEP5

Install the extension sets



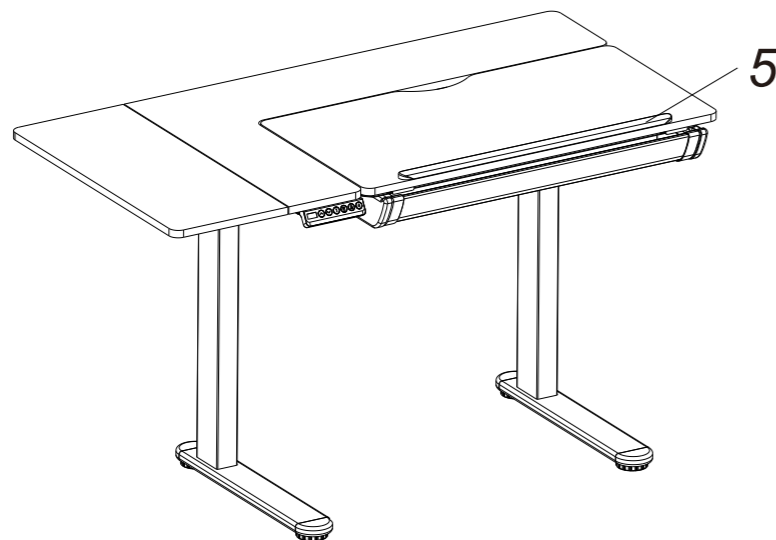
Unfold



Fold away

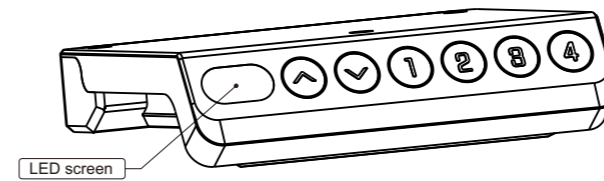
STEP6

Install the supporting pads



How to use handswitch

Key button



●	“▲”	Up button, adjust the desk upwards
●	“▼”	Down button, adjust the desk downwards
●	“1”	Position1, user's first stored height position
●	“2”	Position2, user's second stored height position
●	“3”	Position3, user's third stored height position
●	“4”	Position4, user's fourth stored height position

● Troubleshooting:

1. Reset: When the LED shows "RST", press "▼" button until the desk reaches its lowest height and rebounds to stop, it means the reset has been finished.
2. When it doesn't work and the LED shows "E01" or "E02", please retry 18 mins later.
3. If the "▼" button doesn't work, please check the cable connection and then cut off the power for at least 10 seconds. Reconnect to the power and press "▼" button to start the reset process when it shows the "RST".
4. If all these above process are inefficient, plz contact our customer service.

Common fault treatment

The following tips will help you detected and eliminate the common fault and error. If the fault you met is not listed below, please contact with your supplier. Only the manufacturer and professionals are capable for investigating and correcting those fault and error.

Fault phenomenon	Method
No response while long pressing down arrow after connected with a power supply	1. Check if all the cables be connected well 2. Contact your supplier or dealer
No response while pressing up arrow/ down arrow after connected with a power supply	1. Check if all the cables be connected well 2. Contact your supplier or dealer
Rising in a low speed	1. Check if overloaded, max loading: 50kg; 2. Contact your supplier or dealer
The motor not move as instructed	1. Contact your supplier or dealer
Go down but not go up	1. Reposition 2. Contact your supplier or dealer
Downward sliding	1. Check if overloaded, max loading: 50kg; 2. Contact your supplier or dealer
Frequently Reposition	1. Check if overloaded, max loading: 50kg; 2. Contact your supplier or dealer
Overwork (Duty cycle: Max 2min on/18min OFF)	1. Restart after suspend for 18mins while connecting with power; 2. Contact your supplier or dealer;
Not enough up&down height	1. Press "3" and "4" together for 3 seconds or more, after hearing continuous beeping for twice, it will restore factory settings 2. Contact your supplier or dealer

Operation Instruction

- Adjust Height :
 1. Press the "▲" button, the desk rises, long press to continue to rise, the screen will show "bot" the desktop runs to its highest point.
 2. Press the "▼" button, the desk descends, long press to continue to descend, the screen will show "bot" the desktop runs to its lowest point.
- Memory Preset Height:
 1. When the desktop is stationary, long press the button "1" for 3 seconds, the buzzer will generate a sound prompt and the display shows "S-1", the save is successful, and then adjust the desktop to any height, click the button "1" to adjust the desk to the original memory height.
 2. Button "2", "3", "4" all have the same memory height function as Button "1", repeat the above steps.
- Reset Operation:
 1. When the height of the device is incorrect or an error code appears, the device needs to be reset and corrected. Long press the button "3" and button "4" simultaneously for 3 seconds to enter this function.
 2. After entering the reset function, the display shows "RST", long press the "▼" button to reset the device. When the desktop descends to the lowest height, it will bounce upward and run until it is displayed "bot", that is, the reset is completed.
- 29V DC supply:

The 29V DC supply function will enable when the standing desk stop running for 30 seconds in the unreset state, the 2 pin at the back end of the control box will output 29V DC.
- Adjust the Anti-Collision Sensitivity:
 1. Long press the "▲" button and "▼" button simultaneously for 3 seconds to switch the sensitivity. Switch 1 gear for every operation, there are 4 gear range, A-0, A-1, A-2, A-3
 2. When the display shows "A-0", the desk turns off the anti-collision function; "A-3" for high sensitivity; "A-2" for middle sensitivity; "A-1" for low sensitivity. (Factory default: A-2)
 3. When the desk rises or descends, it will rebound immediately when it encounters an obstacle to protect.



Attention

1. Power supply: AC100V-240V,50/60HZ
2. Service Environment: 0-40 °C
3. Unplug the power plug before cleaning, wipe the dust on surface with slight wet dishcloth when cleaning, be careful not to let the drops into the internal parts, not loose the connector.
4. The electric box contains electronic components, metals, plastics, wires etc., so dispose of it in accordance with each country's environmental legislation, not the general household waste.
5. Check carefully to ensure correct and complete assembly before using.
6. Be familiar with all functions and program settings of the product before first use.
7. Children are forbidden to play on the product because of unforeseen action when playing, so any dangerous consequences caused by this improper action will not be on manufacturers.
8. Slight noise caused by the V-ribbed belt or brake system due to structure will not have any effect on the use of the equipment.
9. Corrosive or abrasive materials are forbidden to clean the equipment. Must ensure that the cleaner used will not pollute the environment.
10. This appliance can be used by children aged from 8 years and above and persons with reduced physical, sensory or mental capabilities or lack of experience and knowledge if they have been given supervision or instruction concerning use of the appliance in a safe way and understand the hazards involved. Children shall not play with the appliance.
11. Cleaning and user maintenance shall not be made by children without supervision.
12. If the supply cord is damaged, it must be replaced by the manufacturer, its service agent or a similarly qualified person in order to avoid a hazard.
13. Please make sure there is no hazard sources in your operating environment. e.g., do not litter the tools around. Always be careful to treat the packaging materials in order to avoid any possible danger, e.g. plastic bag may lead to choking hazard to children.
14. Keep the original package of the equipment if necessary in case of the future use in transportation.

Waste disposal



This marking indicates that this product should not be disposed with other household wastes. To prevent possible harm to the environment or human health from uncontrolled waste disposal, recycle it responsibly to promote the sustainable reuse of material resources. To return your used device, please use the return and collection systems or contact the retailer where the product was purchased. They can take this product for environmental safe recycling.

AGIL
by Inover Home

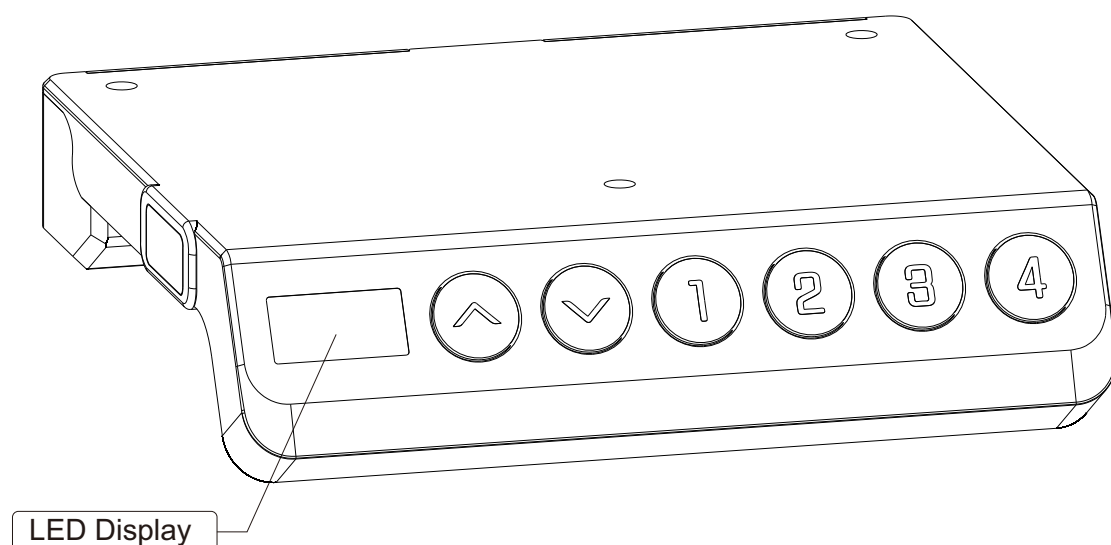
Tel. 02822 / 696 79 26

E-Mail. info@inoverhome.com

Hindenburgallee 8 46446 Emmerich am Rhein

A G I L

1. Product Outline



2. Product Specification

1. Bottom introduction: There are six buttons that "▲", "▼", "1", "2", "3", "4"

(1) "▲" : Adjust the desk upwards

(2) "▼" : Adjust the desk downwards

(3) "1" : Position 1, first height position saved by the user

(4) "2" : Position 2, second height position saved by the user

(5) "3" : Position 3, third height position saved by the user

(6) "4" : Position 4, fourth height position saved by the user

3. Operating Instructions

● Height Adjustable Function:

1. Press the "▲" button, the standing desk will rise up, press and hold to continue to rise, when it rises to the highest point, the digital tube displays top
2. Press the "▼" button, the standing desk will drop down, long press and continue to drop down to the lowest point, the digital tube displays bot

● Height Memory Function:

1. When the desktop is in a static state, press and hold the button "1" for three seconds, the buzzer will produce an audible prompt, and the display shows "S-1", which means the save is successful, and then run the desktop to any height, click the button "1" Can run to the original memory height
2. Buttons "2", "3" and "4" all have the same memory height function as button "1", just repeat the above steps

● Reminder Function:

1. When the height of the device is incorrect or an error code appears, the device needs to be reset and corrected. At the same time, press and hold the "3" and "4" keys for three seconds to enter this function.
2. After entering the reset function, the display shows "RST". At this time, press and hold the "▼" button to reset the device. When the desktop drops to the lowest height, it starts to rebound and move upwards until it displays "bot", which means the reset is complete.

● 29V DC power supply function:

1. When the standing desk is not in the reset state, after 1 second from running to stopping, the 29V DC power supply function will be turned on, and the 2pin at the back of the control box will output a DC 29V voltage.

● Anti-collision sensitivity adjustment - optional features:

1. Simultaneously press the "▲" button and "▼" button for three seconds to switch the sensitivity, one operation to switch one gear, divided into 4 gears, A-0, A-1, A-2, A-3
2. The display shows "A-0" to close the anti-collision function; the display shows "A-3" high sensitivity; the display shows "A-2" Medium sensitivity; the display shows "A-1" Low sensitivity. (Factory default A-2)
3. When the desk rises or falls, it will rebound immediately when encountering obstacles, which plays a protective role.

● Code processing:

1. Reset function definition, the LED display shows "RST" or "rst", at this time, press and hold the "▼" button to start the device reset, when the desktop drops to the lowest height, it starts to rebound and run upwards until it displays "bot", that is, the reset is complete.
2. If "E01" or "E02" appears, please let the table rest for more than 18 minutes before it can be used normally.
3. If other codes appear and long press the "▼" button does not respond, please confirm that the connection line is not damaged and the connection is normal, and the power is cut for more than 10 seconds, and the power is turned on again, the display "RST" or "rst", then long press "▼" Button to reset.
4. If you perform the above operations, the desk still does not operate normally, please contact customer service.

Waste disposal



This marking indicates that this product should not be disposed with other household wastes. To prevent possible harm to the environment or human health from uncontrolled waste disposal, recycle it responsibly to promote the sustainable reuse of material resources. To return your used device, please use the return and collection systems or contact the retailer where the product was purchased. They can take this product for environmental safe recycling.